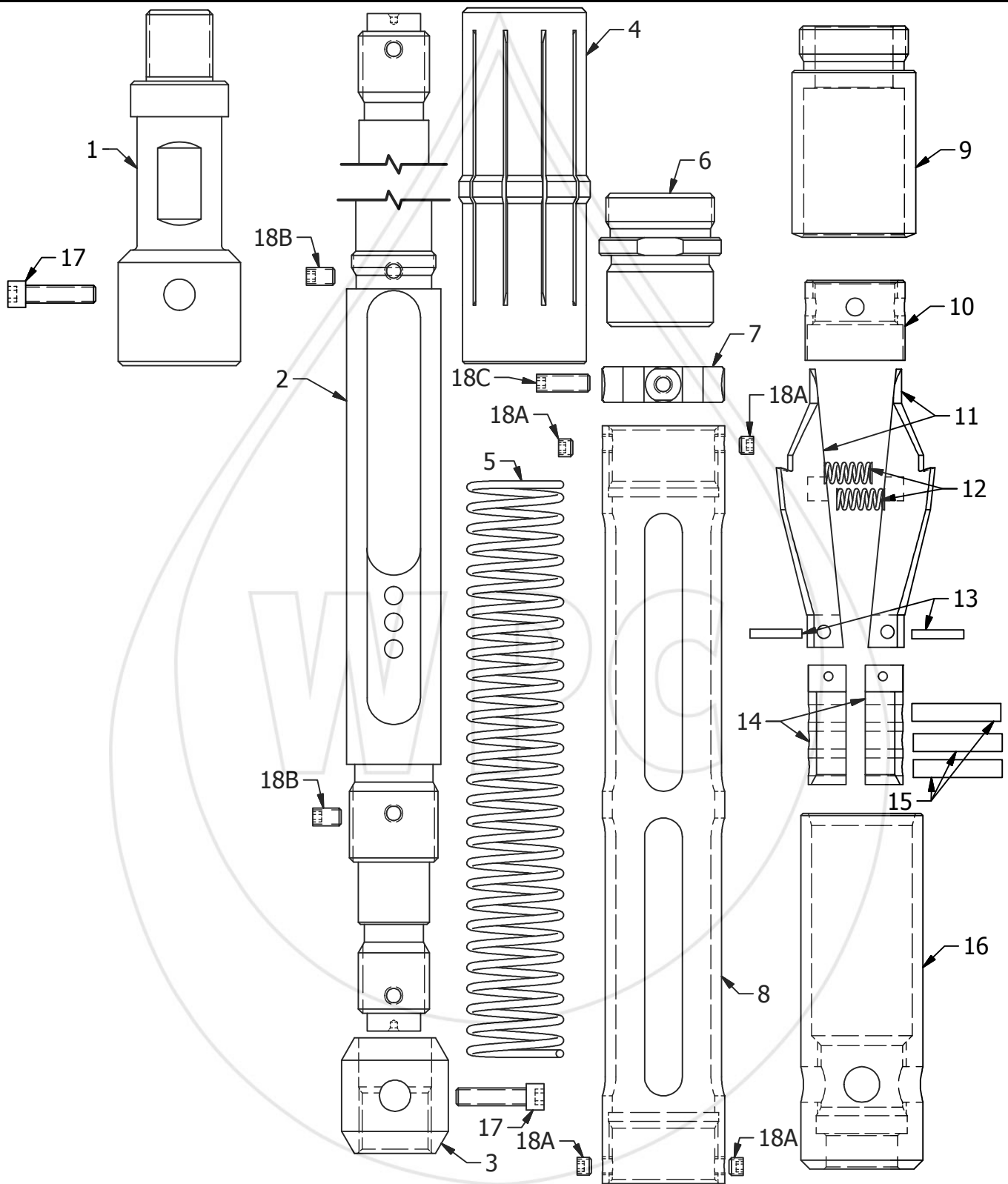


WESTERN PRESSURE CONTROLS 2005 LTD.



TOOL

D2-SHIFTING TOOL



**WESTERN PRESSURE
CONTROLS 2005 LTD.**
10021-56TH AVENUE
EDMONTON, AB, CA
PH: (780) 437-3615
FX: (780) 437-3616

www.westernpressure.com

WESTERN PRESSURE CONTROLS 2005 LTD.

#	PART NAME	2"	2.5"	3"
	ASSEMBLY	J2.000D200	J2.500D200	J3.000D200
1	FISHNECK	J2.000D201	J2.500D201	J3.000D201
2	MANDREL	J2.000D202	J2.500D202	J3.000D202
3	THREAD PROTECTOR	J2.000D214	J2.500D214	J3.000D214
4	COLLET SIZE 1	1.807" J1.807D215	2.281" J2.281D215	2.75" J2.750D215
4	COLLET SIZE 2	1.843" J1.843D216	2.343" J2.343D216	2.81" J2.813D216
4	COLLET SIZE 3	1.906" J1.906D217	--	--
5	MANDREL SPRING	J2.000D206	J2.500D206	J3.000D206
6	CONNECTOR ADJUSTER	J2.000D203	J2.500D203	J3.000D203
7	NUT	J2.000D204	J2.500D204	J3.000D204
8	SLEEVE	J2.000D205	J2.500D205	J3.000D205
9	RETRACTOR	J2.000D208	J2.500D208	J3.000D208
10	RETAINER SLEEVE	J2.000D207	J2.500D207	J3.000D207
11	DOG	J2.000D210	J2.500D210	J3.000D210
12	DOG SPRING	J2.000D209	J2.500D209	J3.000D209
13	DOG PIN	J2.000D211	J2.500D211	J3.000D211
14	KEY	J2.000D212	J2.500D212	J3.000D212
15	KEY PIN	1/4"	1/4"	1/4"
16	DOG RETAINER	J2.000D213	J2.500D213	J3.000D213
17	SOCKETED CAP SCREW	1/4-20UN	1/4-20UN	1/4-20UN
18A	SET SCREW	1/4-20UN	1/4-20UN	1/4-20UN
18B	SET SCREW	1/4-20UN	1/4-20UN	1/4-20UN
18C	SET SCREW	1/4-20UN	1/4-20UN	1/4-20UN
--	COLLET TO RETRACTOR DIMENSION	15.69"	16.62"	17.12"

PURPOSE:

To shift "L" type sliding sleeves in a controlled selective manner.

SPECIFICATIONS:

- Run upright to open sleeves and run inverted to close sleeves.
- The dimension from the bottom of the collet bump to the bottom of the retractor, when tool is assembled, must be precise for the tool to properly function.

TOOL

D2-SHIFTING TOOL



WESTERN PRESSURE CONTROLS 2005 LTD.
 10021-56TH AVENUE
 EDMONTON, AB, CA
 PH: (780) 437-3615
 FX: (780) 437-3616

www.westernpressure.com