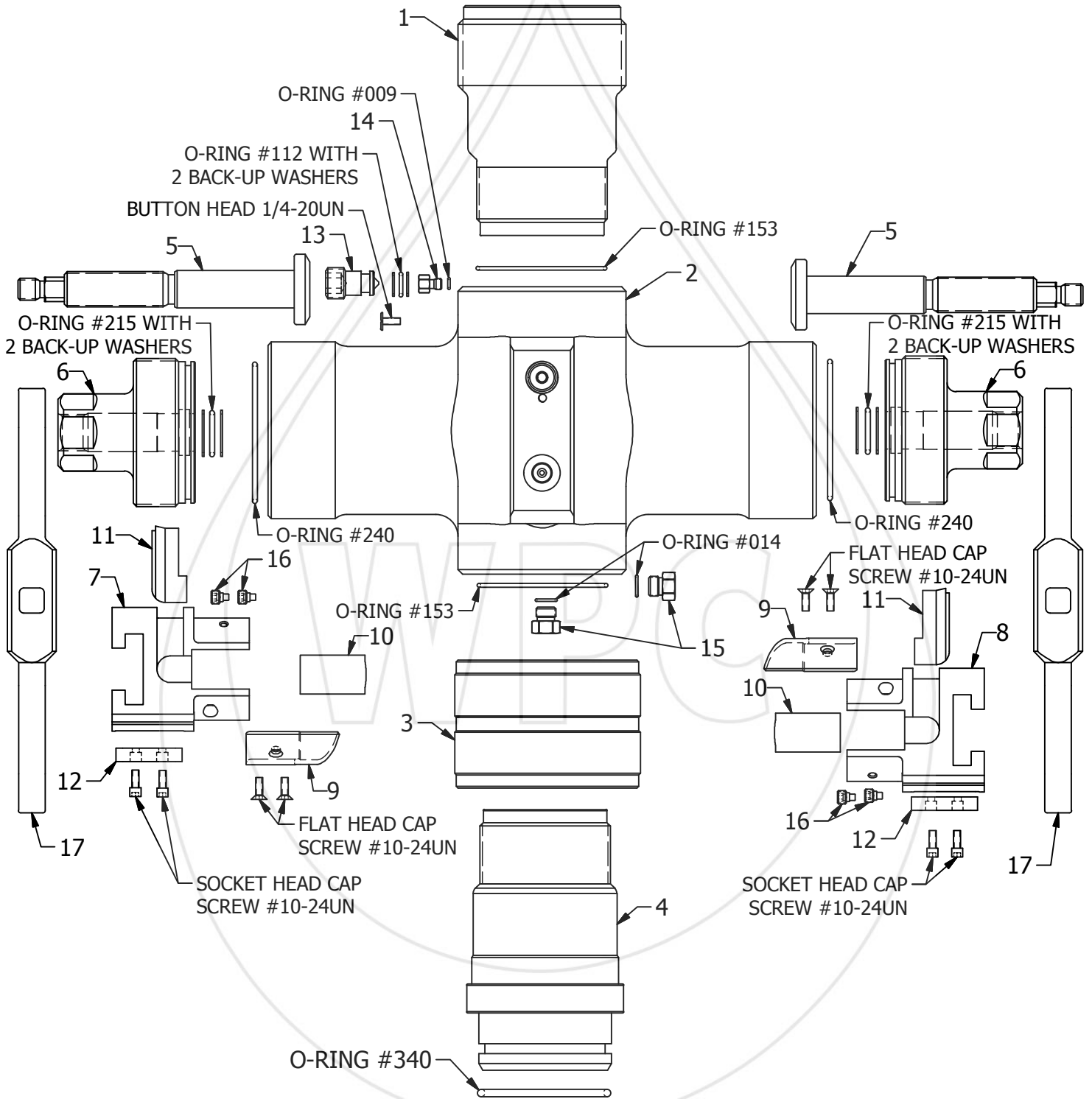


# WESTERN PRESSURE CONTROLS 2005 LTD.



TOOL

## W.P.C. 3" WIRELINE VALVE



**WESTERN PRESSURE  
CONTROLS 2005 LTD.**  
 10021-56TH AVENUE  
 EDMONTON, AB, CA  
 PH: (780) 437-3615  
 FX: (780) 437-3616

[www.westernpressure.com](http://www.westernpressure.com)

# WESTERN PRESSURE CONTROLS 2005 LTD.

#	PART NAME	3"
	ASSEMBLY	A3.000BOP00
1	TOP SUB	A3.000BOP01
2	BODY	A3.000BOP02
3	UNION NUT	A3.000BHU03
4	BOTTOM SUB	A3.000BOP16
5	RAM SHAFT	A3.000BOP05
6	ENDCAP	A3.000BOP06
7	RAM BLOCK A	A3.000BOP07A
8	RAM BLOCK B	A3.000BOP07B
9	BRAIDED LINE GUIDE	A3.000BOP08B
9	SLICK LINE GUIDE	A3.000BOP08S
10	INNER RAM BLOCK SEAL	A3.000BOP53
11	OUTER RAM BLOCK SEAL	A3.000BOP54
12	GUIDE KEYS	A3.000BOP11
13	BLEEDOFF VALVE	A3.000BOP13
14	VALVE SEAT	A3.000BOP14
15	O.R.B.	-6 O.R.B.
16	RAM BLOCK INNER SEAL RETAINER SCREW	A3.000BOP52
17	HANDLE	A3.000BOP04

O-RINGS:

009 (x1)  
 014 (x2)  
 112 (x1) BACK-UP WASHERS (x2)  
 153 (x2)  
 215 (x2) BACK-UP WASHERS (x4)  
 240 (x2)  
 340 (x1)

SET SCREWS:

BUTTON HEAD 1/4"-20UN (x1)  
 SOCKET HEAD CAP SCREWS #10-24UN (x4)  
 FLAT HEAD CAP SCREWS #10-24 (x4)

PURPOSE:

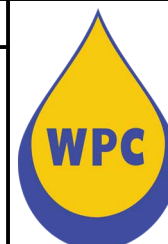
To equalize and isolate pressure to the lubricator without closing the wellbore.

SPECIFICATION:

Pressure rating 5000psi  
 Standard custom blue powder coating  
 upon request nickel coating

TOOL

**W.P.C.**  
**3" WIRELINE VALVE**



**WESTERN PRESSURE  
 CONTROLS 2005 LTD.**  
 10021-56TH AVENUE  
 EDMONTON, AB, CA  
 PH: (780) 437-3615  
 FX: (780) 437-3616

[www.westernpressure.com](http://www.westernpressure.com)