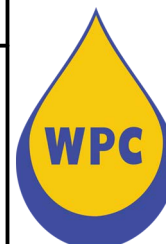


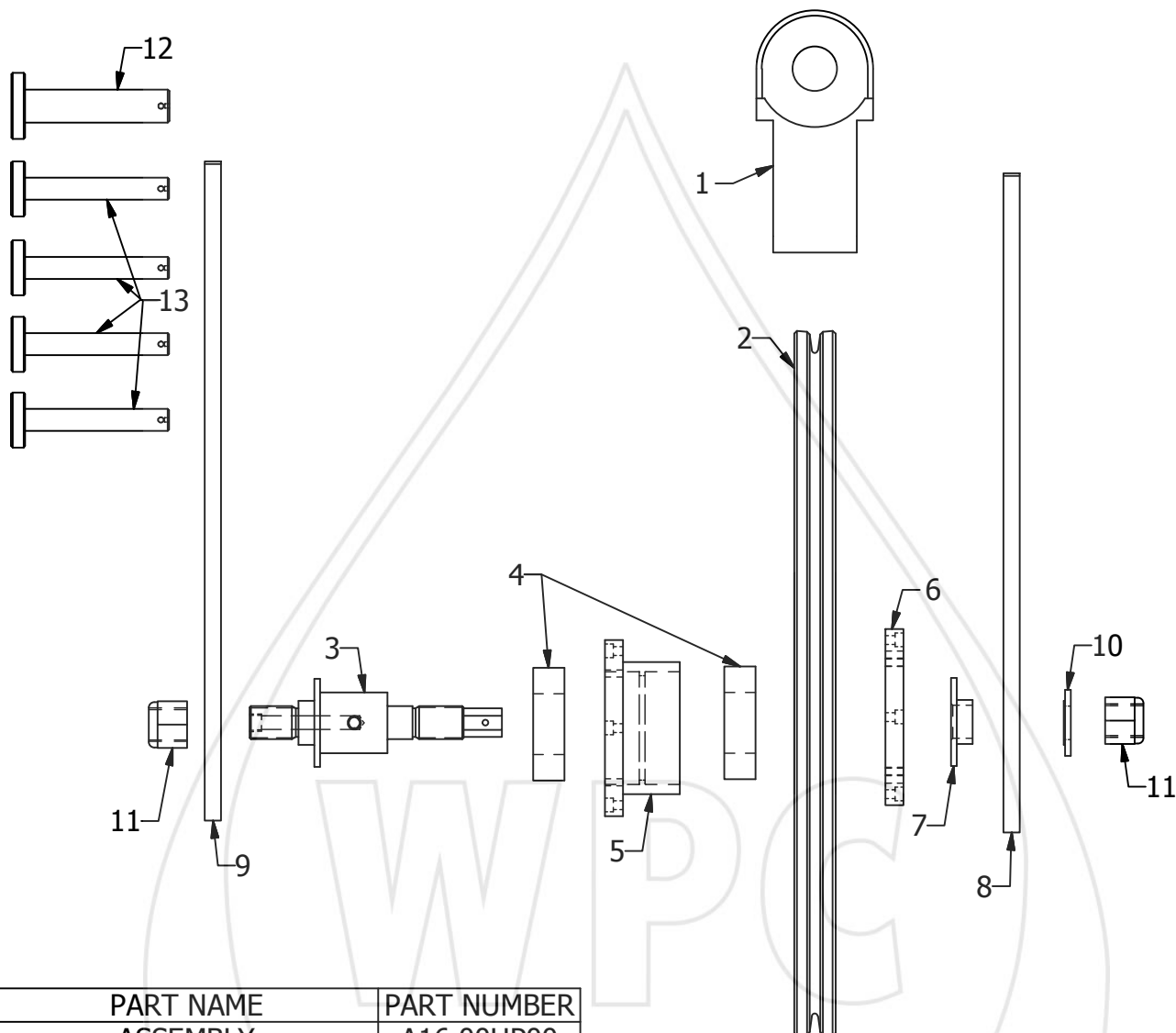
TOOL

W.P.C. 16" HD-HAY PULLEY



**WESTERN PRESSURE
CONTROLS 2005 LTD.**
10021-56TH AVENUE
EDMONTON, AB, CA
PH: (780) 437-3615
FX: (780) 437-3616

www.westernpressure.com



#	PART NAME	PART NUMBER
	ASSEMBLY	A16.00HP00
1	RETAINER LUG	A16.00HP01
2	16" WHEEL	A16.00HP04
3	SHAFT	A16.00HP08
4	BEARING CUPS AND CONES	A16.00BN01 A16.00BN02
5	BEARING HOUSING	A16.00HP06
6	HOUSING RING	A16.00HP07
7	SHROUD WASHER	A16.00HP09
8	DYNAMIC SHROUD	A16.00HP03
9	STATIC SHROUD	A16.00HP02
10	SPACER WASHER	A16.00HP11
11	SHAFT NUT	3/4 NF NYLOC
12	CENTRE LOCK PIN	A16.00HP05
13	GUIDE LOCK PIN	A16.00HP12

PURPOSE:

The W.P.C. hay pulley is designed to attach to a load/weight cell at the well head and re-direct wireline from the wireline drum to the stuffing box or top sheave perpendicular to the lubricator.

SPECIFICATIONS:

Working load 6000lbs.
Sheave hanger sold seperatly.

TOOL

W.P.C. 16" HD-HAY PULLEY



**WESTERN PRESSURE
CONTROLS 2005 LTD.**
10021-56TH AVENUE
EDMONTON, AB, CA
PH: (780) 437-3615
FX: (780) 437-3616

www.westernpressure.com